



# REMIC RESHAPE

## RE7100 / RE7200 Getting Started Guide

MICROPHONES RE7100 AND RE7200  
AND MOUNTS FOR VIOLIN / VIOLA /  
CELLO / DOUBLE BASS / CONCERTO BASS /  
BRASS INSTRUMENTS / PENCIL HOLDER



[www.remic.dk](http://www.remic.dk)

# RE7100 RESHAPE



# RE7100 RESHAPE

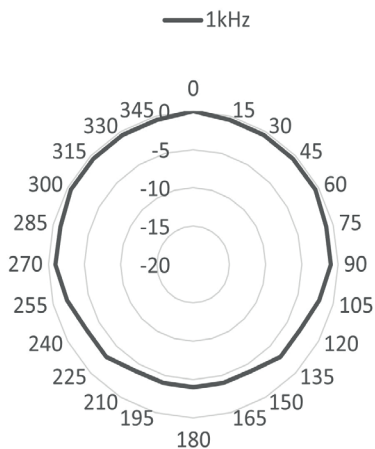
## TECHNICAL SPECIFICATIONS

<b>Acoustical Principle of Operation:</b>	Pressure
<b>Cartridge Type:</b>	High-definition pre-polarized condenser element
<b>Directional Pattern:</b>	Omnidirectional
<b>Frequency Range:</b>	20 Hz – 20 KHz
<b>Sensitivity at 1 kHz:</b>	6 mV/Pa (-44 dB rel.1V/Pa)
<b>Sensitivity Tolerance:</b>	+/-2 dB (50 Hz – 16 kHz)
<b>Signal-to-Noise Ratio, A-weighted:</b>	68 dB (re. 94 dB SPL)
<b>Maximum SPL for THD &lt; 1%:</b>	125 dB (SPL peak)
<b>Supply Voltage:</b>	6 - 48 V Phantom
<b>Connector:</b>	XLR3 M
<b>Weight:</b>	8 g (microphone only)
<b>Cable Length:</b>	2 meters



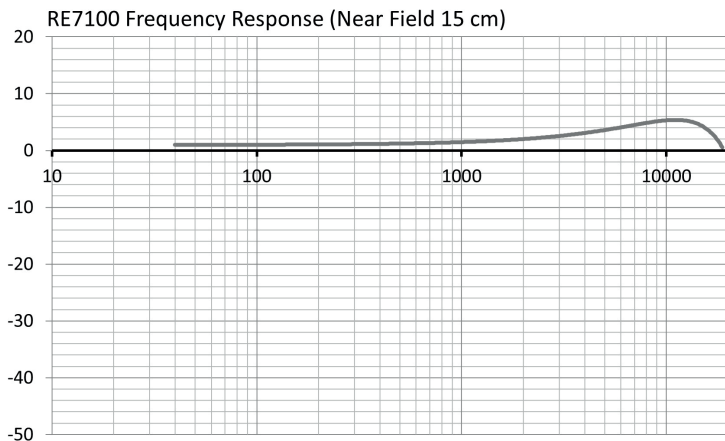
# RE7100 RESHAPE

## DIRECTIONALITY



# RE7100 RESHAPE

## FREQUENCY RESPONSE



# RE7200 RESHAPE



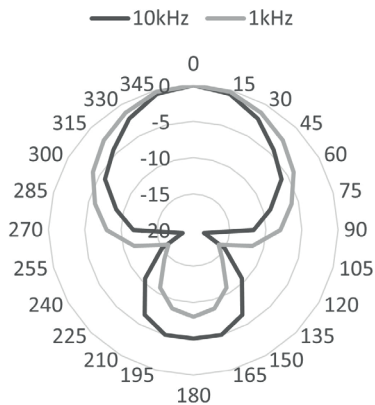
# RE7200 RESHAPE

## TECHNICAL SPECIFICATIONS

<b>Acoustical Principle of Operation:</b>	Pressure gradient
<b>Cartridge Type:</b>	Precision matched high-definition pre-polarized condenser elements (dual-diaphragm)
<b>Directional Pattern:</b>	Supercardioid
<b>Frequency Range:</b>	20 Hz – 20 KHz
<b>Sensitivity at 1 kHz:</b>	6 mV/Pa (-44 dB rel.1V/Pa)
<b>Sensitivity Tolerance:</b>	+/-2 dB (50 Hz – 16 kHz)
<b>Signal-to-Noise Ratio, A-weighted:</b>	66 dB (re. 94 dB SPL)
<b>Maximum SPL for THD &lt; 1%:</b>	128 dB (SPL peak)
<b>Supply Voltage:</b>	6 - 48 V Phantom
<b>Connector:</b>	XLR3 M
<b>Weight:</b>	8 g (microphone only)
<b>Cable Length:</b>	2 meters



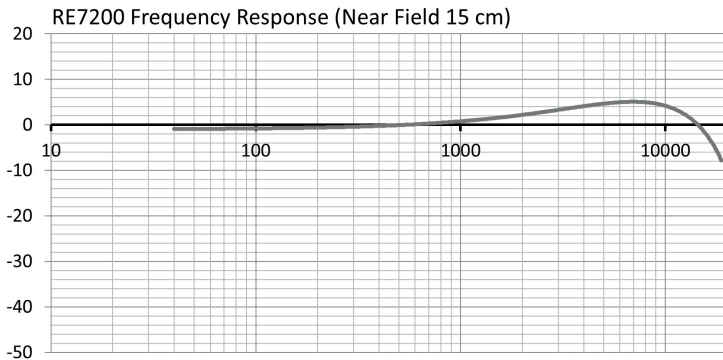
# RE7200 RESHAPE DIRECTIONALITY



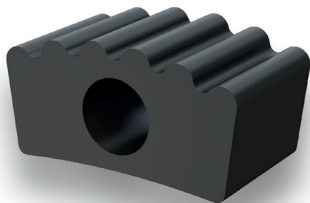


# RE7200 RESHAPE

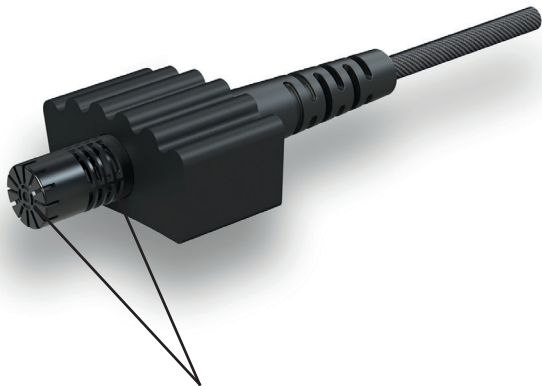
## FREQUENCY RESPONSE



# VI7000 VIOLIN MOUNT



# PLACEMENT VI7000



The microphone must be placed with the tip outside the mount to capture sound from the front and sides.



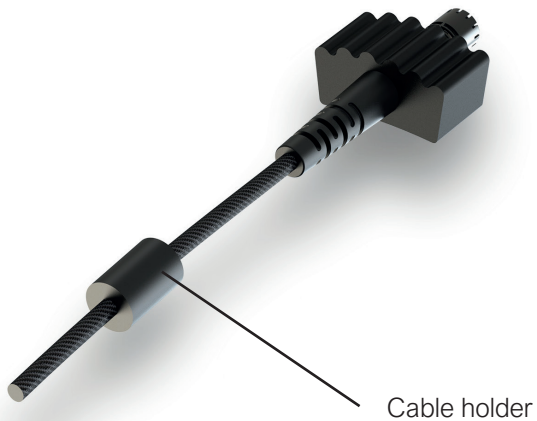
# PLACEMENT VI7000



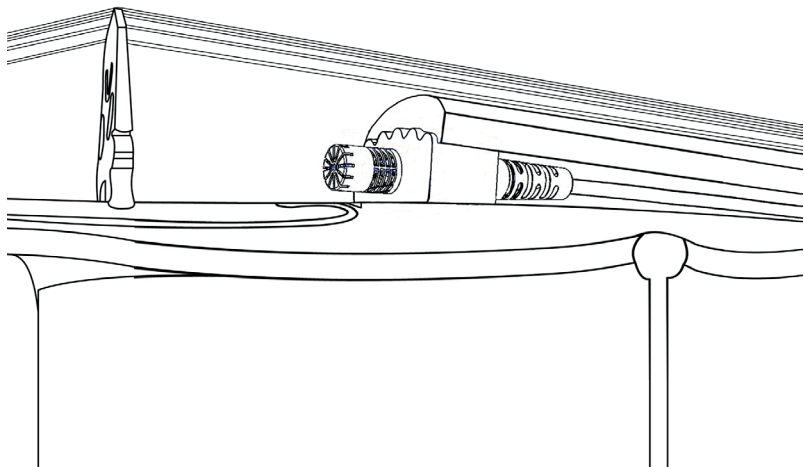
Cable holder



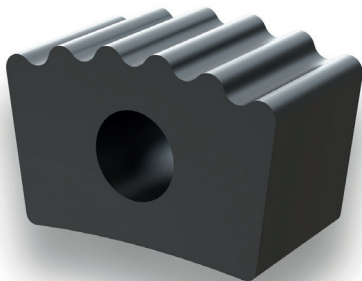
# PLACEMENT VI7000



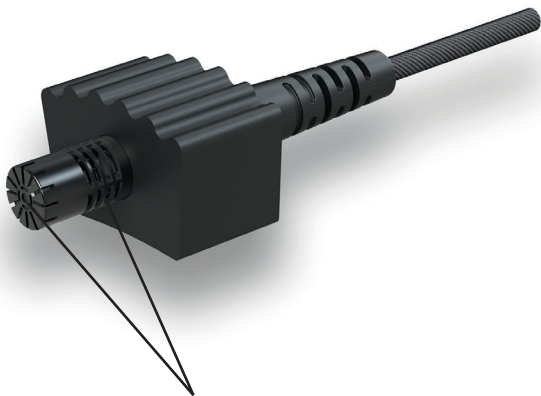
# PLACEMENT ON THE VIOLIN: UNDER THE FINGERBOARD



# MOUNT FOR VIOLA VA7000



# PLACEMENT VA7000



The microphone must be placed with the tip outside the mount to capture sound from the front and sides.





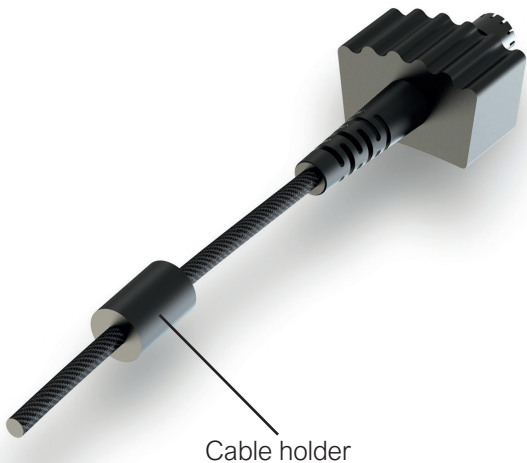
# PLACEMENT VA7000



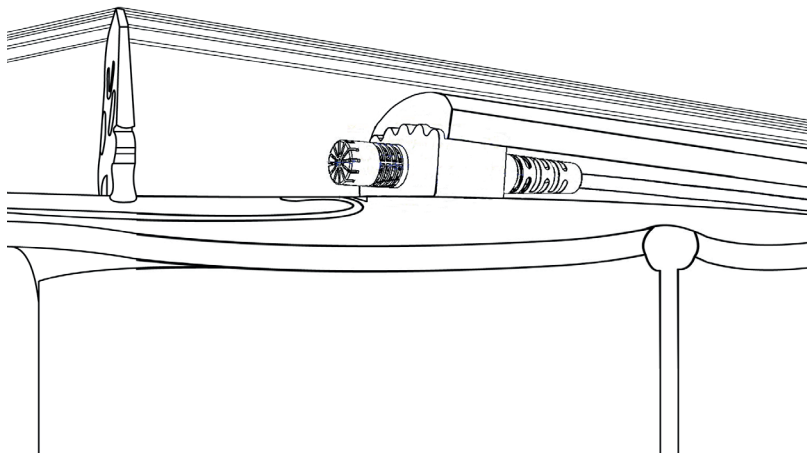
Cable holder



# PLACEMENT VA7000



# PLACEMENT ON THE VIOLA: UNDER THE FINGERBOARD



# MOUNT AND CABLE HOLDER FOR CELLO CE7000



Mount



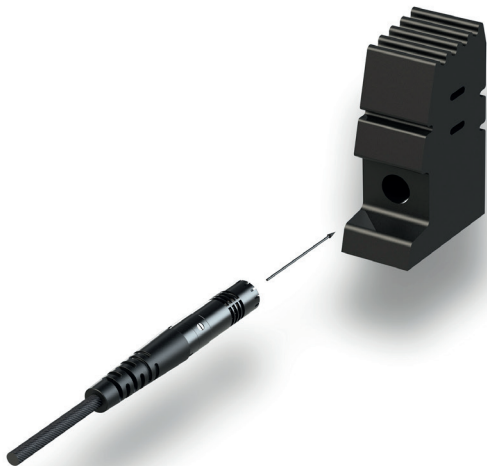
Cable holder



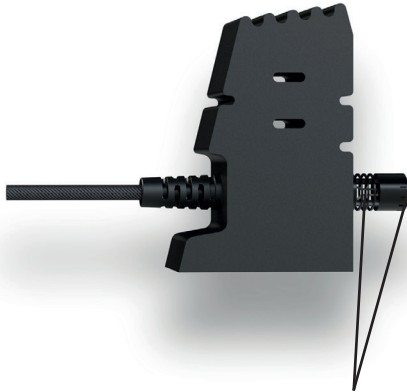
# PLACEMENT CE7000



# PLACEMENT CE7000



# PLACEMENT CE7000



The microphone must be placed with the tip outside the mount to capture sound from the front and sides.



# PLACEMENT CE7000



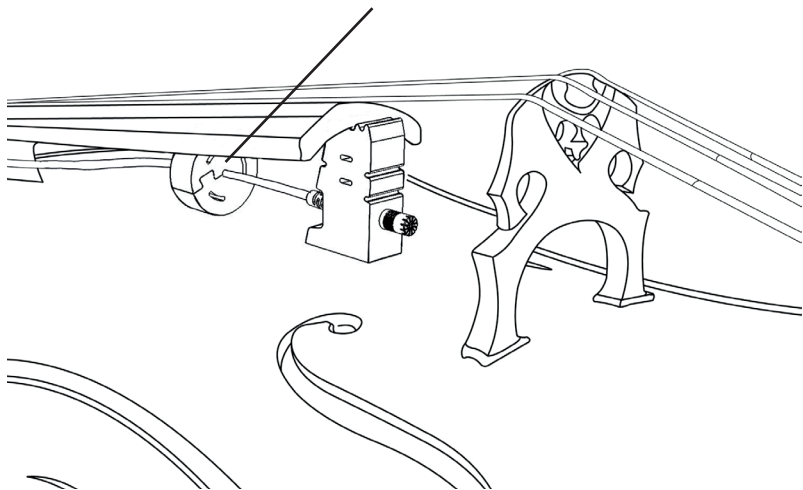
The microphone must be placed with the tip outside the mount to capture sound from the front and sides.





# PLACEMENT ON THE CELLO: UNDER THE FINGERBOARD

Place the cable holder on the cable before mounting it onto the instrument.



# MOUNT AND CABLE HOLDER FOR DOUBLE BASS BA7000



Mount



Cable holder



# PLACEMENT BA7000



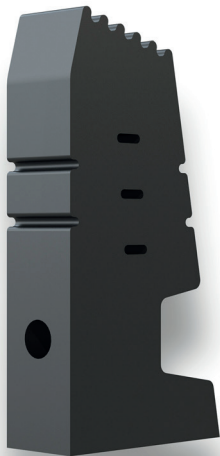
The microphone must be placed with the tip outside the mount to capture sound from the front and sides.



# PLACEMENT BA7000



# MOUNT AND CABLE HOLDER FOR CONCERTO BASS BA7001



Mount



Cable holder



# PLACEMENT BA7001



The microphone must be placed with the tip outside the mount to capture sound from the front and sides.

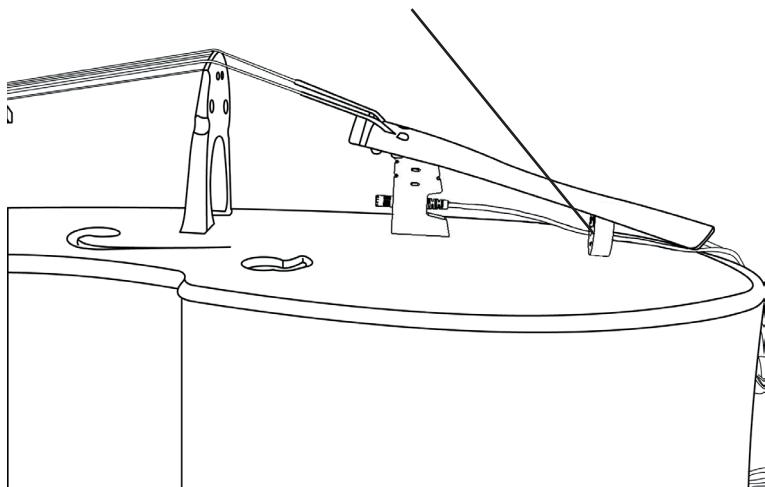


# PLACEMENT BA7001



# PLACEMENT BA7000 + BA7001 UNDER THE TAILPIECE (RECOMMENDED)

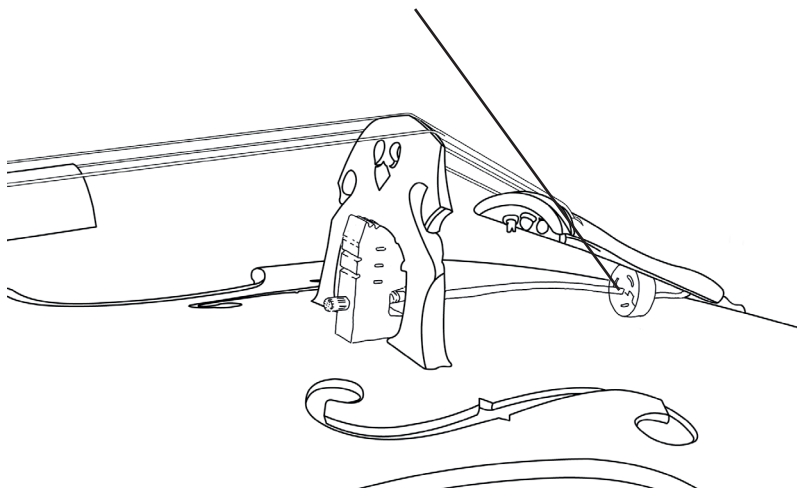
Place the cable holder on the cable before mounting it onto the instrument.





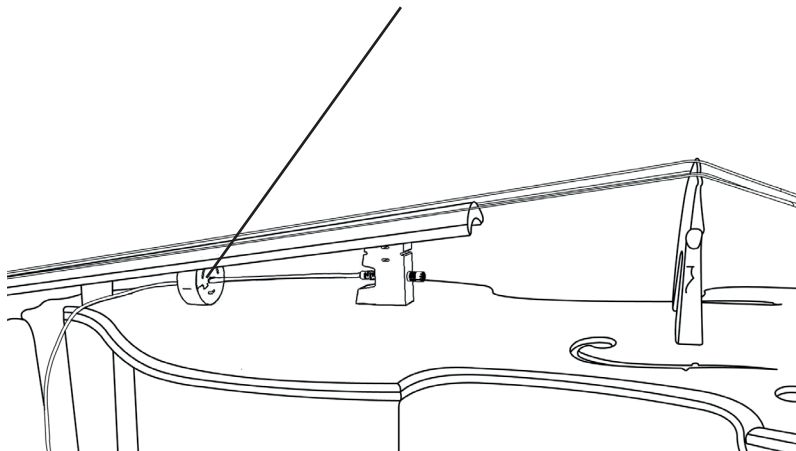
# PLACEMENT BA7000 + BA7001 UNDER THE BRIDGE (ALTERNATIVE)

Place the cable holder on the cable before mounting it onto the instrument.



# PLACEMENT BA7000 + BA7001 UNDER THE FINGERBOARD (ALTERNATIVE)

Place the cable holder on the cable before mounting it onto the instrument.

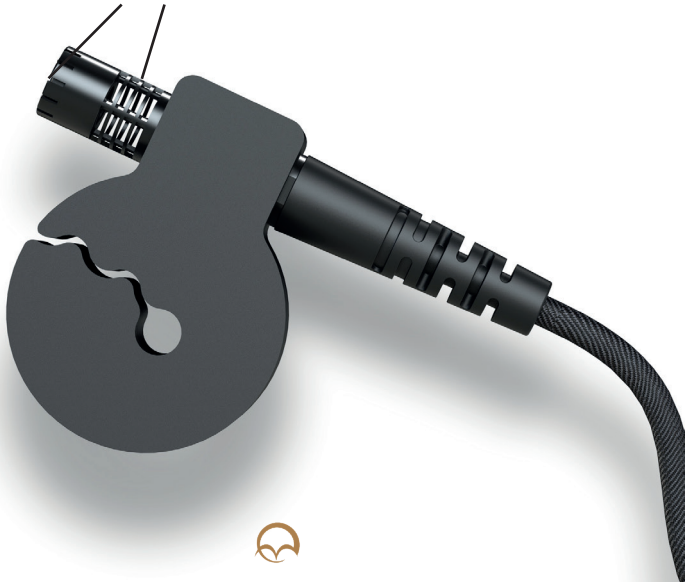


# MOUNT BR7000 FOR BRASS INSTRUMENTS



# PLACEMENT BR7000

The microphone must be placed with the tip outside the mount to capture sound from the front and sides.



# PLACEMENT BR7000



# PLACEMENT BR7000



# PLACEMENT BR7000: ON THE BELL



# PLACEMENT BR7000: ON THE BELL

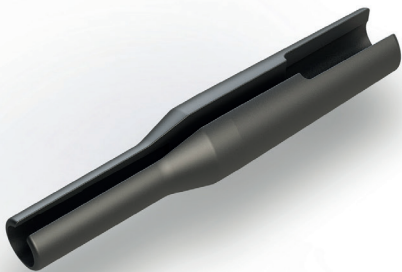




# PLACEMENT BR7000: ON THE BELL



# PENCIL HOLDER PH7000

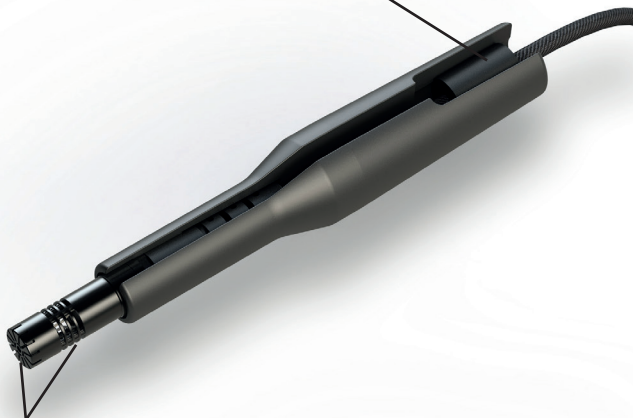


The PH7000 pencil holder is compatible with the microphone clamp K&M 85035 from König & Meyer for small microphones with a diameter of between 17 – 22 mm.



# PENCIL HOLDER PH7000

Use the grommet as cable fixation to place the microphone firmly in the pencil holder.



The microphone must be placed with the tip outside the mount to capture sound from the front and sides.



# PENCIL HOLDER PH7000



# PENCIL HOLDER PH7000



# PENCIL HOLDER PH7000



# PENCIL HOLDER PH7000



# SERVICE

For any questions related to the use of your microphone, please contact the reseller you bought it from.

You will find a full list on our website:  
<https://www.remic.dk/where-to-buy/>

For any warranty issues, please contact us directly:

**REMIC MICROPHONES APS**  
C/O Laigaard Financial Services  
Store Kongensgade 40H  
DK-1264 Copenhagen K  
Denmark  
E: [support@remic.dk](mailto:support@remic.dk)



[www.remic.dk](http://www.remic.dk)

DESIGNED AND MADE IN DENMARK



REMIC MICROPHONES ® is a registered trademark of REMIC MICROPHONES ApS.